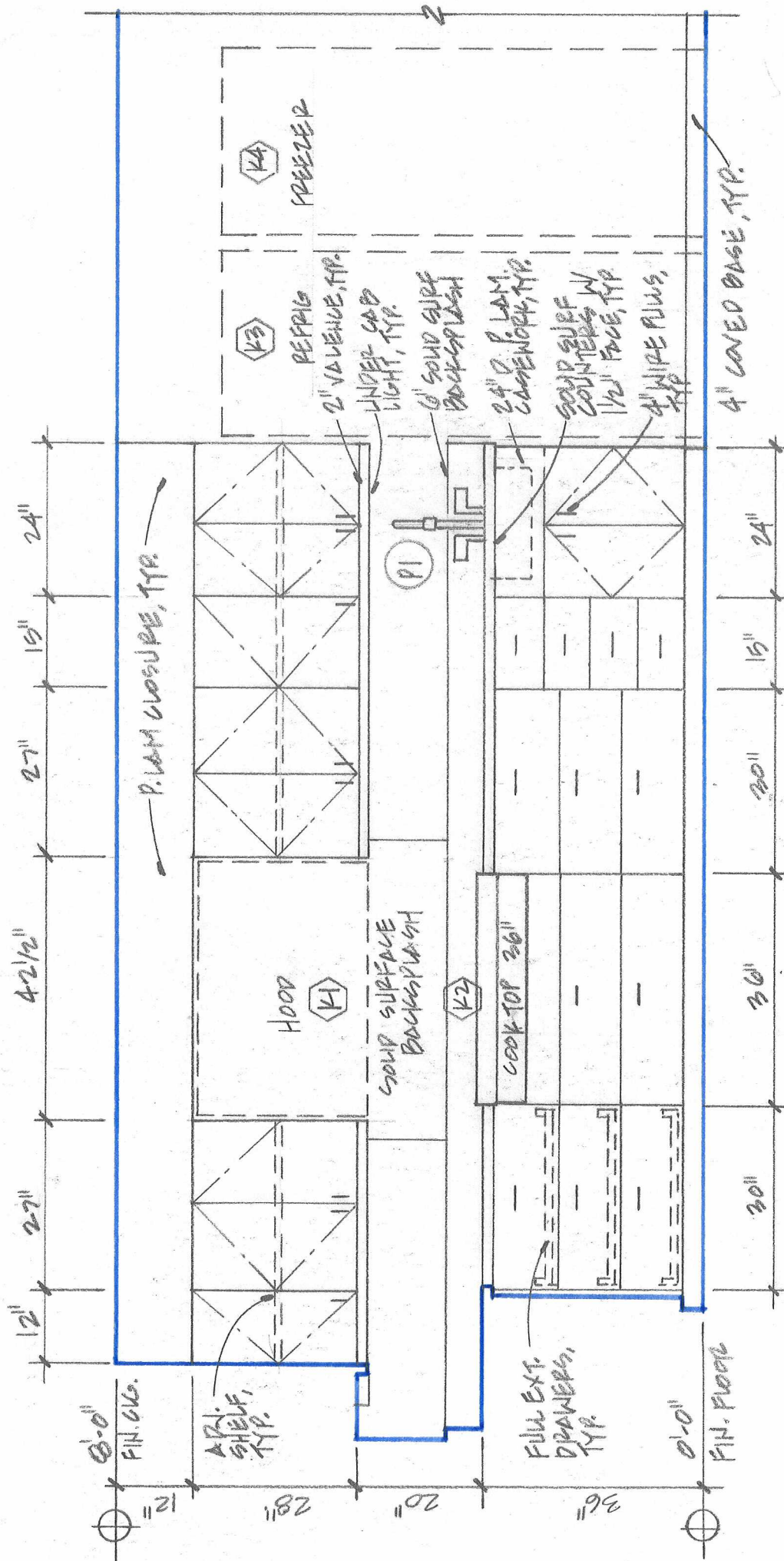


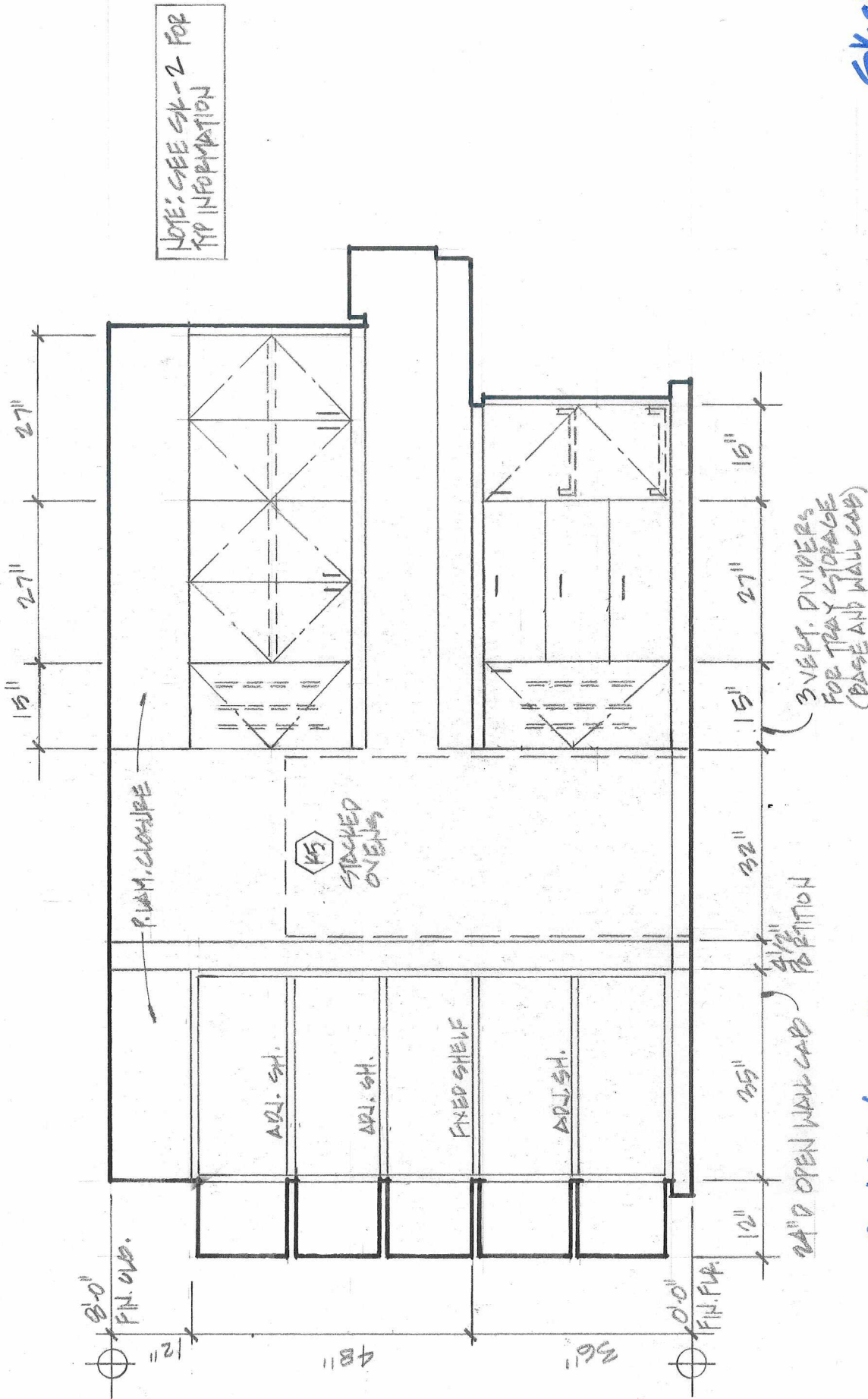
GRACE BIBLE CHURCH
 KITCHEN ADDITION

SK-1
 1/4" = 1'-0"
 6-8-07



COOK/PREP

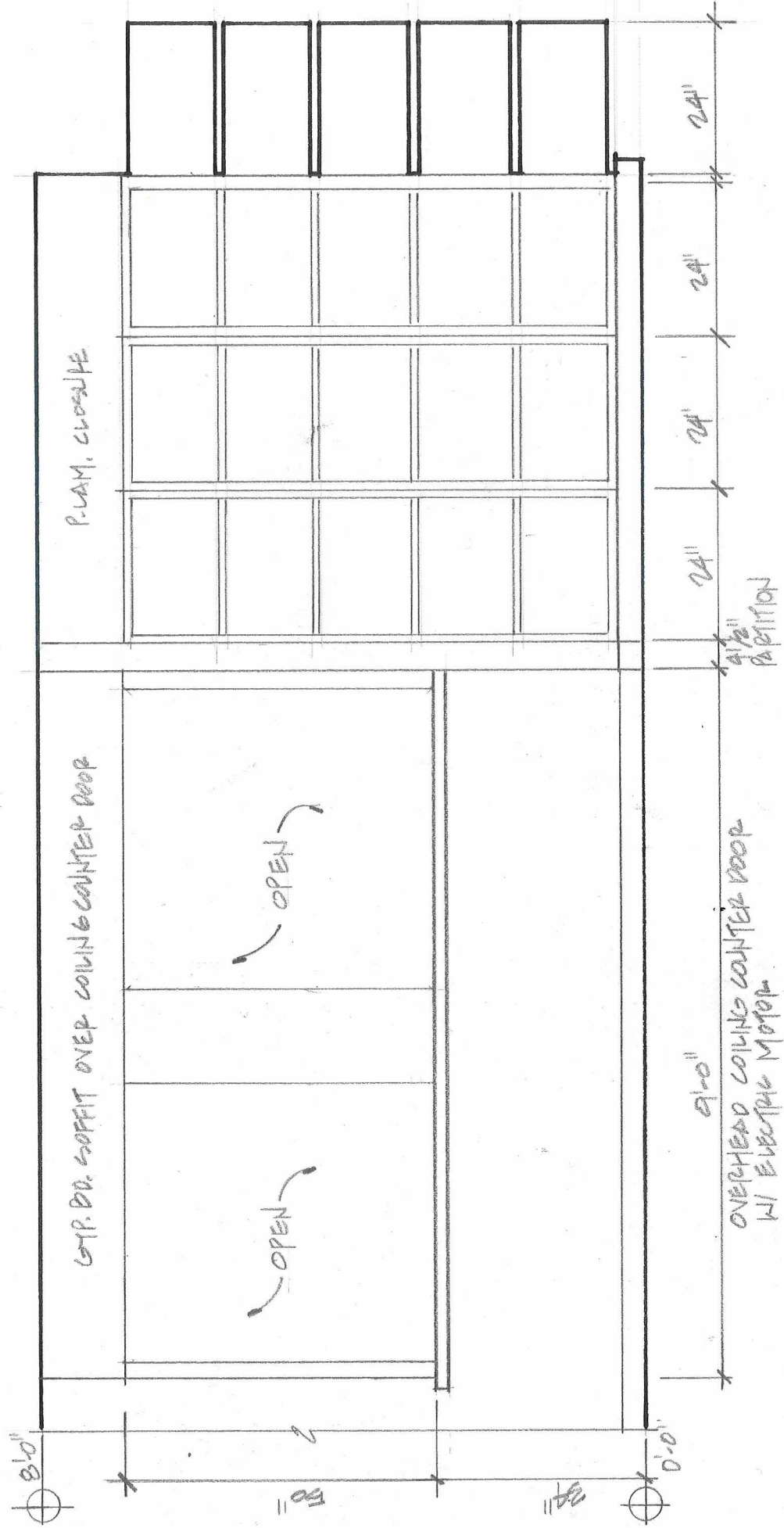
SK-2
 1/2" = 1'-0"
 6-8-07



PANTRY/LOOK

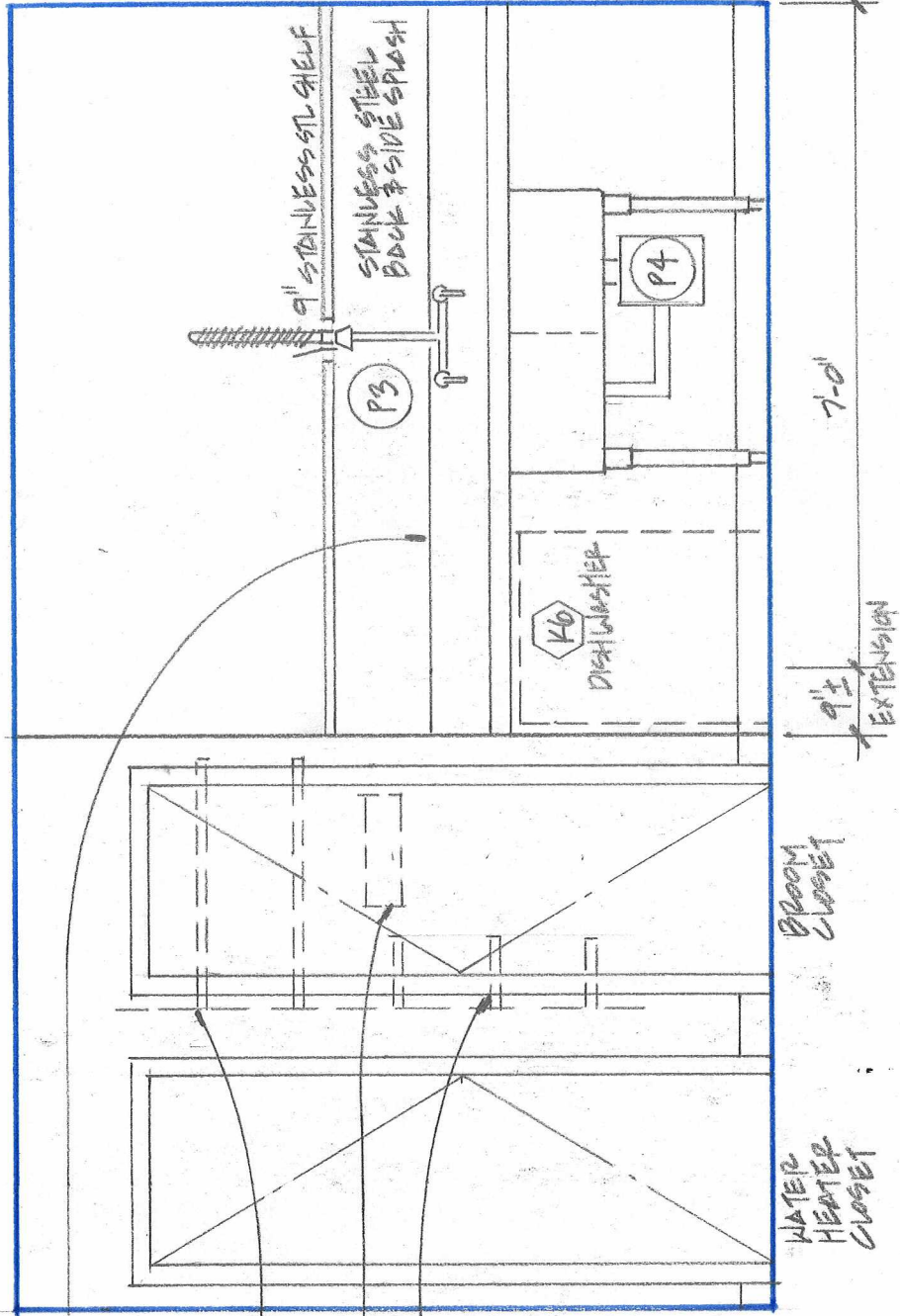
SK-3
 1/2" = 1'-0"
 6-8-07

NOTE: SEE SK-2 FOR
TYP. INFORMATION



SERVERY/PANTRY

SK-4
1/2" = 1'-0"



STAINLESS STEEL
2-COMP SINK W/ 3-HP
CABBAGE DISPOSAL
AND GARMENT SPRAYER

12" SHELVES ON
BACK WALL

MOP / BROOM HOLDER

9" SHELVES ON
SIDEWALL

CLEAN-UP

SK-B
12" = 1'-0"

